



AMIC/MWCF SKIDCAR Training Now Includes Automated Traffic Scenarios



Because they must often operate vehicles at high speeds and in hazardous conditions, driving skills are critical for law enforcement and emergency personnel.

The League’s Loss Control Division has offered Proactive Driver Training to its AMIC and MWCF members for nearly two decades. In April 2000, a state-of-the-art SKIDCAR system was purchased and the League began offering AMIC/MWCF’s Proactive Driver training throughout the state in early 2001.

What is SKIDCAR training?

The Swedish-made, state-of-the-art SKIDCAR System has been shown to instill better driving instincts to help drivers maintain control in the most difficult real-life situations. The SKIDCAR System is specifically designed to aid in the development of techniques that would be risky to learn in a regular vehicle at higher speeds. It consists of a steel framework on electro-hydraulic wheels

attached to the suspension of a vehicle that, through the use of an instructor-operated electronic controller, can be adjusted to simulate loss of front, rear or four-wheel grip at low speeds. This means the instructor can create subtle-to-extreme skid conditions at a low speed in a small geographic space.

In 2019 the program was expanded to include an Automated Traffic Scenario Simulator (ATSS) that uses a series of red and green lights to simulate oncoming cars, cross-traffic or stopped traffic. The ATSS is specifically designed to teach students how to properly clear an intersection – one of the greatest dangers of any first responder job.

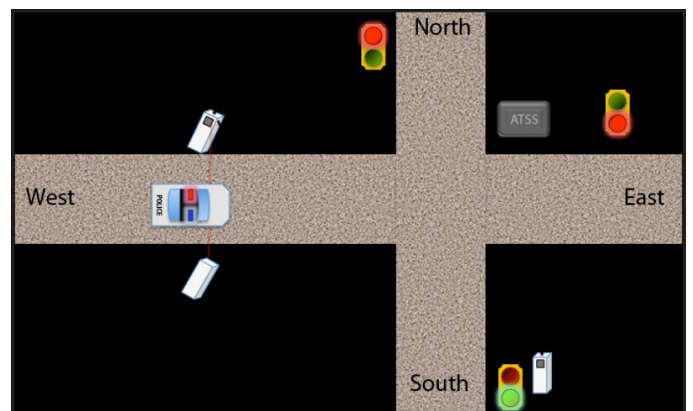
When is training offered?

AMIC/MWCF’s Proactive Driver Training program is offered throughout the state at various times of the year and consists of a day-long session in which a maximum of 12 people are trained using the SKIDCAR System. The first two hours of the course takes place in a classroom setting. The remainder of the program is hands-on and completed in shifts. Three participants ride in the vehicle (one driving, two in the back seat) with the instructor while the remaining nine observe how the vehicle responds and help maintain the training course.

Although the Proactive Driver Training program was originally designed for law enforcement employees, ALL municipal employees are strongly encouraged to complete the program for their own driving safety. AMIC/MWCF’s goal is to provide as many drivers as possible with the techniques and skills to safely overcome adverse driving situations they might encounter on a day-to-day basis.

Who conducts the training?

Pete Folmar, who is responsible for the AMIC/MWCF’s Proactive Driver Training Program, has more than 26 years of law enforcement experience. He joined the AMIC/MWCF Loss Control Division in December 2020.



For more information on AMIC/MWCF’s Proactive Driver Training program, contact Donna Wagner, Loss Control Coordinator, at 334-262-2566 or via email at dwagner@almonline.org.